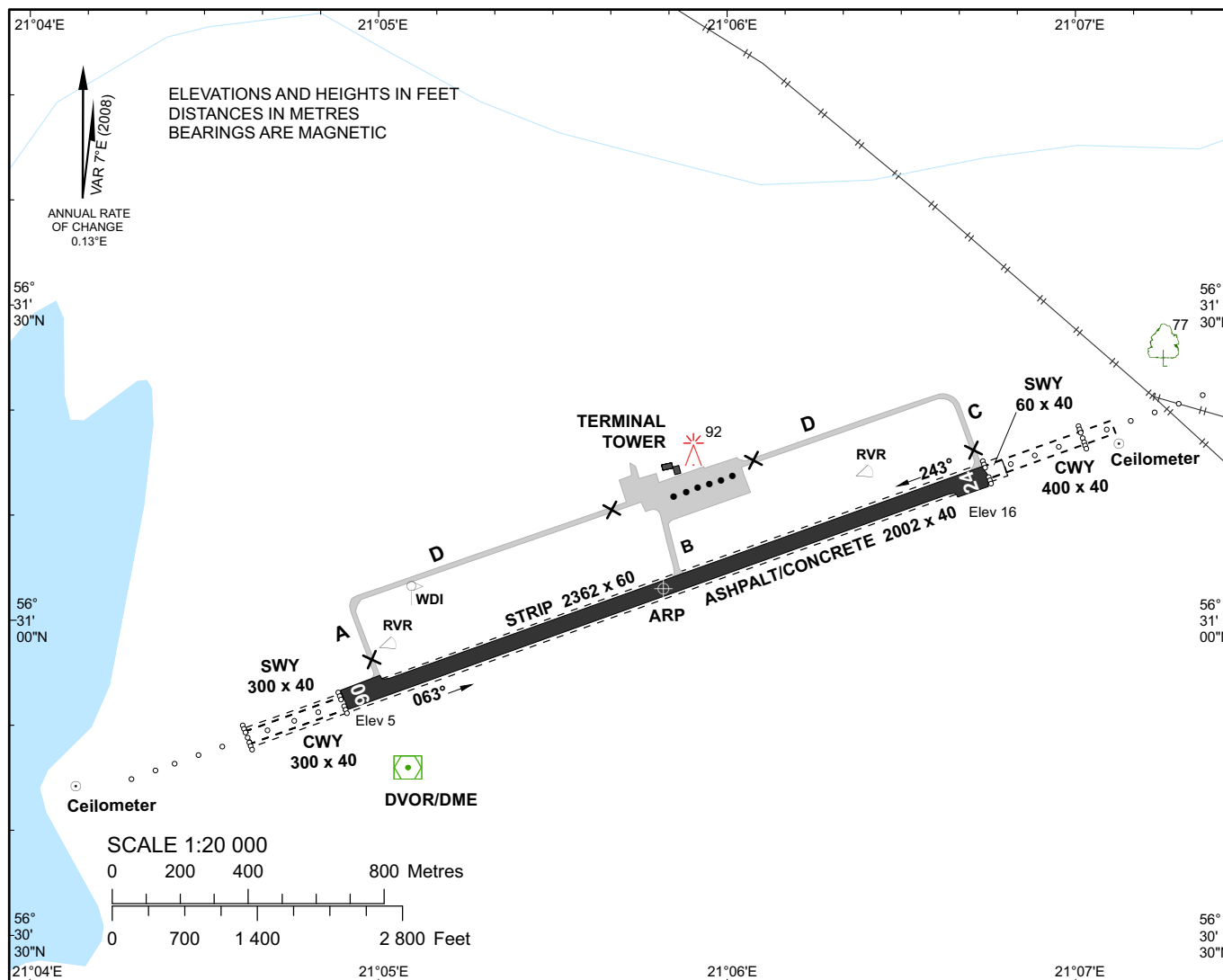


AIP LATVIA

EVLA AD 2.24.1 - 1
07 MAY 2009

AERODROME CHART - ICAO **56°31'03"N** **021°05'49"E** **ELEV 16'** **TOWER 129.400** **LIEPAJA/Intl**

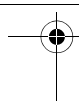


RWY MARKING



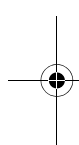
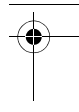
TAXYWAYS		APRON		AERODROME LIGHTING			
WIDTH: A, C, D 14m B 14.6m		SURFACE: Asphalt/concrete		APCH lights: RWY 06 Simple ALS 750m LIL RWY 24 Simple ALS 900m LIL			
SURFACE: Asphalt/concrete		STRENGTH: PCN 11/F/C/Y/T		RWY lights: 75m white, last 600m yellow edge lights LIL green threshold lights red end lights			
STRENGTH: A PCN 10/F/D/W/T B PCN 63/F/A/W/T C PCN 17/F/C/W/T D PCN 16/F/D/W/T							
RWY	TRUE DIRECTION	THR	BEARING STRENGTH	DECLARED DISTANCES			
				TORA	TODA	ASDA	LDA
06	070.26°	56°30'52.15"N 021°04'54.32"E	PCN 26/F/B/W/T Asphalt/concrete	2002	2402	2062	2002
24	250.29°	56°31'14.02"N 021°06'44.51"E		2002	2302	2302	2002

Changes: editorial



EVLA AD 2.24.1 - 2
07 MAY 2009

AIP LATVIA



INTENTIONALLY LEFT BLANK

