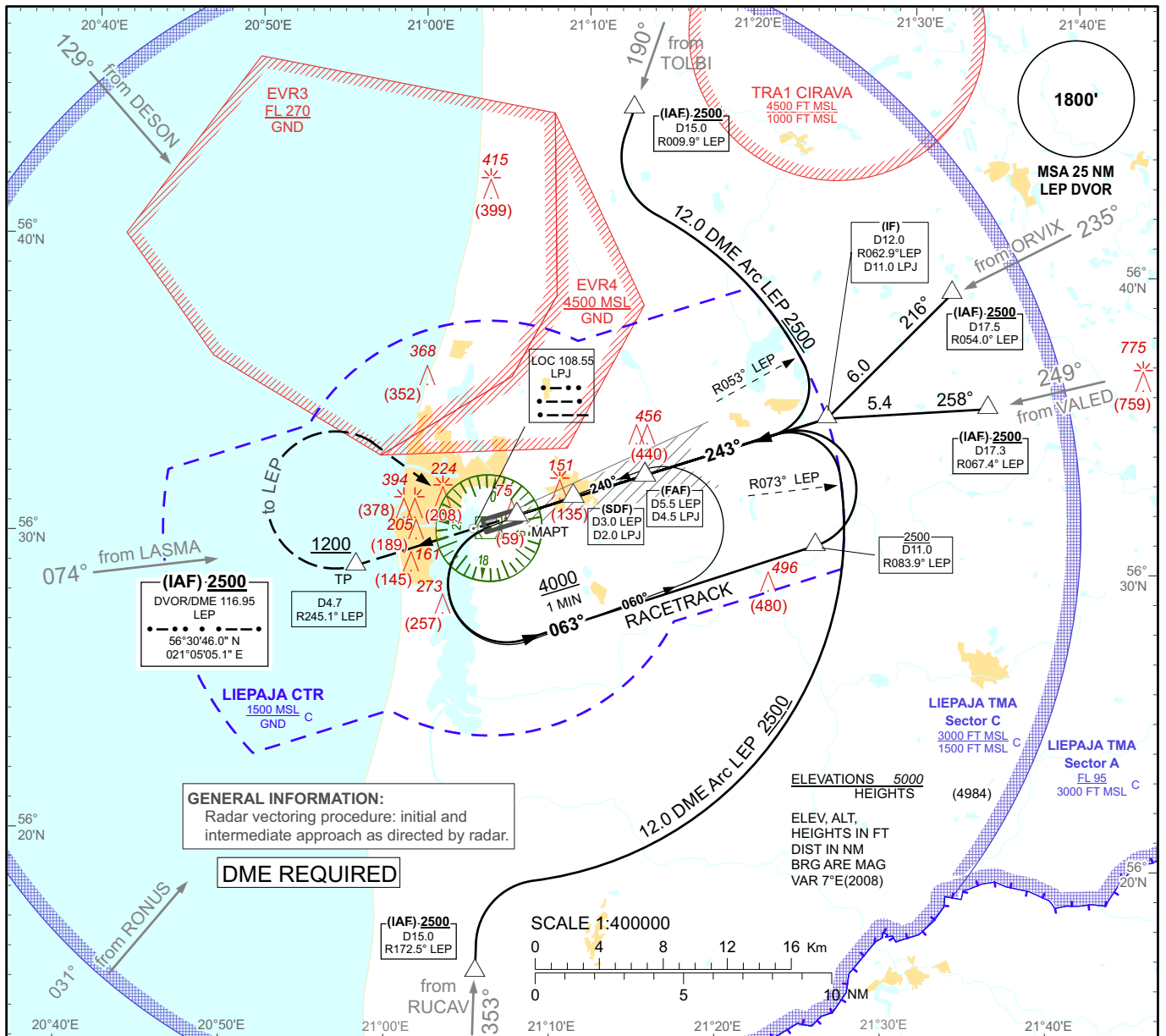


**INSTRUMENT  
APPROACH  
CHART - ICAO**

**AERODROME ELEV 16'**  
HEIGHTS RELATED TO  
THR RWY 24 - ELEV 16'

TOWER 129.400

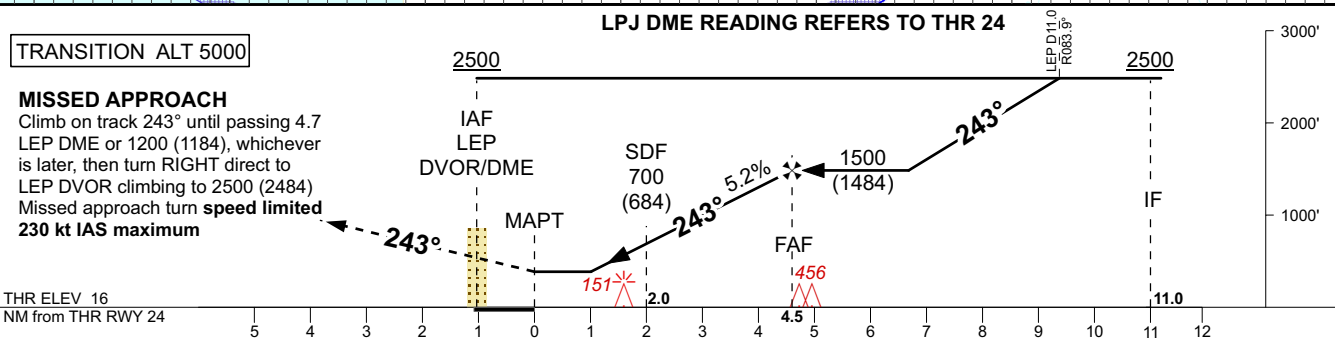
**LIEPAJA/Intl**  
**LOC RWY 24**



**GENERAL INFORMATION:**  
Radar vectoring procedure: initial and intermediate approach as directed by radar.

**DME REQUIRED**

SCALE 1:400000



Aircraft Category		A	B	C	D	DME LPJ	4.0	3.0	2.0
Straight-in Approach OCA(H)	LOC	400 (390)				DME LEP	5.0	4.0	3.0
						DIST THR	4.0	3.0	2.0
						ALTITUDE	1320	1010	690
Circling		690 (680)		850 (830)	850 (840)	HEIGHT	(1304)	(994)	(674)

Timing not authorized for defining the MAPT

GS	Kt	80	100	120	140	160	180
Rate of descent (5.2%)	ft/min	420	530	640	740	850	960
FAF-MAPT(4.5 NM)	min:sec	03:25	02:43	02:16	01:57	01:42	01:31

Changes: new chart

LIEPAJA/Intl

LOC RWY 24

AERONAUTICAL DATA TABULATION

LOC approach to RWY 24 from TOLBI, ORVIX, VALED, RUCAV, LEP DVOR/DME (IAF)	
Fix/point	Coordinates
LEP D15.0 R009.9° (IAF)	56°45'04.6"N 021°12'55.1"E
LEP D17.5 R054.0° (IAF)	56°39'15.4"N 021°32'48.0"E
LEP D17.3 R067.4° (IAF)	56°35'25.1"N 021°35'14.2"E
LEP D15.0 R172.5° (IAF)	56°15'49.2"N 021°05'23.4"E
LEP DVOR/DME (IAF)	56°30'46.0"N 021°05'05.1"E
LEP D12.0 R062.9° (IF)	56°34'54.6"N 021°25'25.5"E
LEP D5.5 R062.1° (FAF)	56°32'45.4"N 021°14'27.9"E
LEP D3.0 R061.0° (SDF)	56°31'54.5"N 021°10'09.4"E
LEP D1.0 R056.2° (MAPT)	56°31'14.0"N 021°06'44.5"E
LEP D4.7 R245.1° (TP)	56°29'18.9"N 020°57'05.7"E