

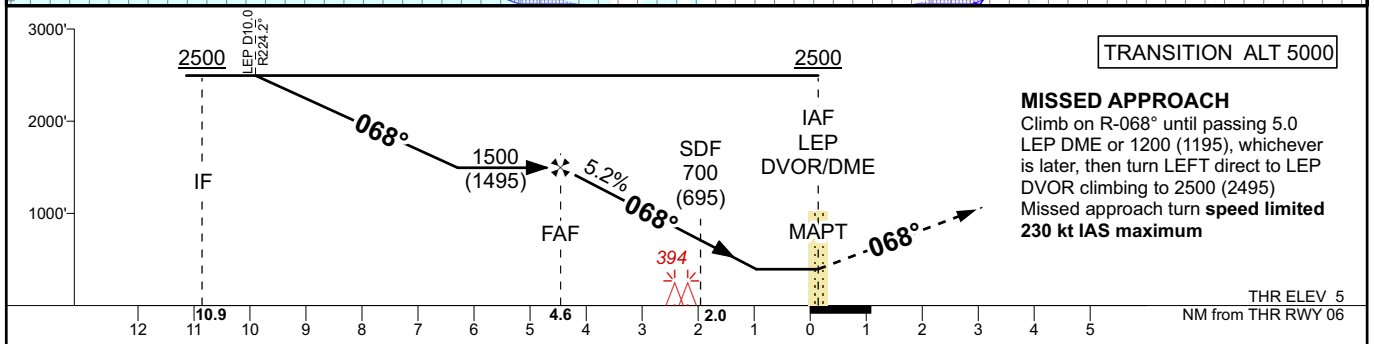
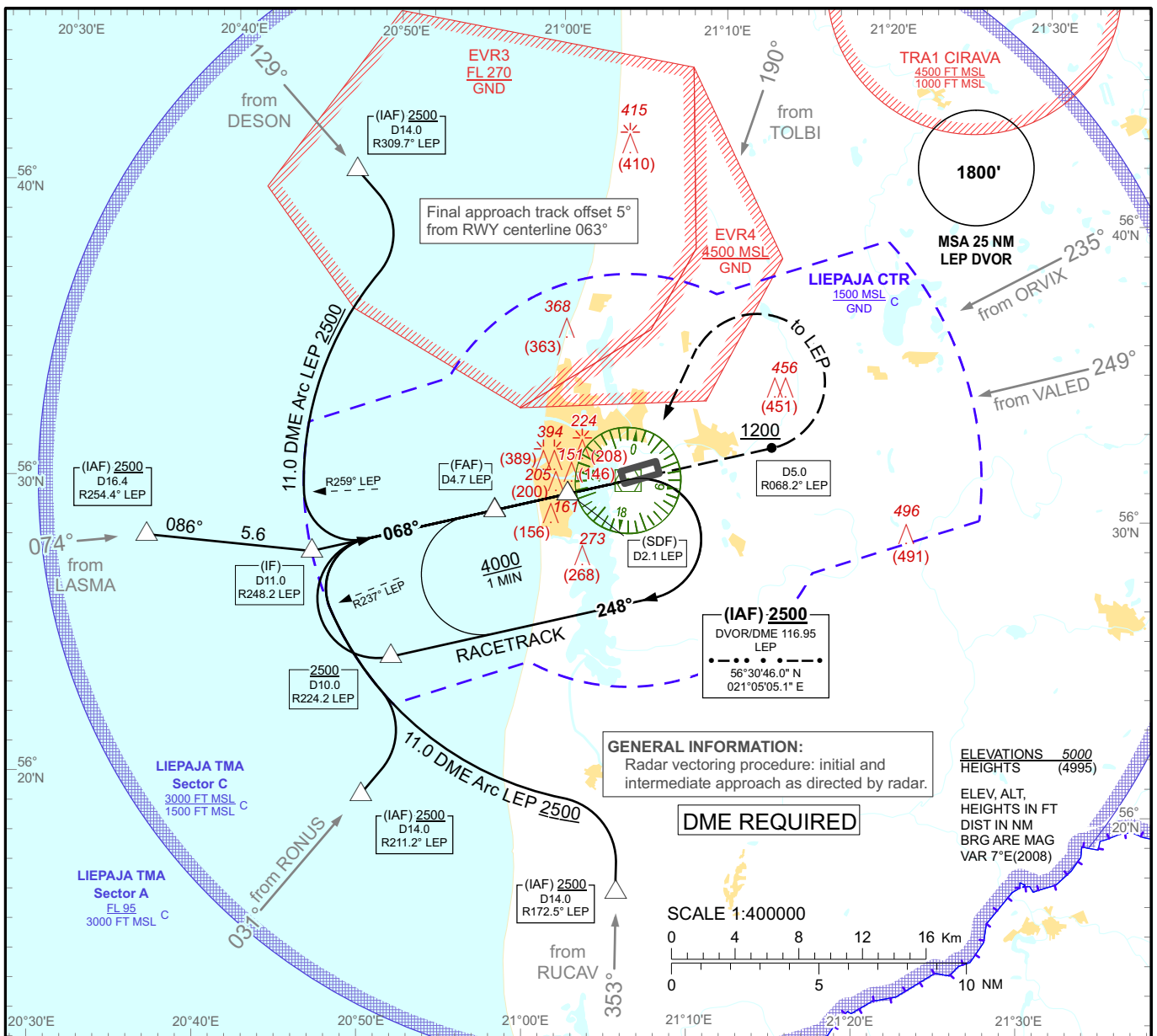
**INSTRUMENT
APPROACH
CHART - ICAO**

AERODROME ELEV 16'
HEIGHTS RELATED TO
THR RWY 06 - ELEV 5'

TOWER 129.400

LIEPAJA/Intl

VOR RWY 06



TRANSITION ALT 5000

MISSED APPROACH
Climb on R-068° until passing 5.0 LEP DME or 1200 (1195), whichever is later, then turn LEFT direct to LEP DVOR climbing to 2500 (2495)
Missed approach turn **speed limited 230 kt IAS maximum**

Aircraft Category		A	B	C	D	LEP	4	3	2
Straight-in Approach OCA(H)	VOR/DME	400 (400)				DIST THR	3.9	2.9	1.9
	VOR	580 (570)				ALTITUDE	1290	980	660
Circling		690 (680)		850 (840)		HEIGHT	(1285)	(975)	(655)
Timing not authorized for defining the MAPT									
GS		Kt		80	100	120	140	160	180
Desc.Rate(5.2%)		ft/min		422	528	633	739	844	950
FAF-MAPT(4.7 NM)		min:sec		03:32	02:50	02:22	02:01	01:46	01:34

Changes: TRA1 CIRAVA established

LIEPAJA/Intl

VOR RWY 06

AERONAUTICAL DATA TABULATION

VOR approach to RWY 06 from RUCAV, RONUS, LASMA, DESON, LEP DVOR/DME (IAF)	
Fix/point	Coordinates
LEP D14.0 R172.5° (IAF)	56°16'48.7"N 021°05'22.3"E
LEP D14.0 R211.2° (IAF)	56°19'45.4"N 020°49'36.6"E
LEP D16.4 R254.4° (IAF)	56°28'12.1"N 020°35'47.0"E
LEP D14.0 R309.7° (IAF)	56°40'52.5"N 020°47'38.6"E
LEP DVOR/DME (IAF)	56°30'46.0"N 021°05'05.1"E
LEP D11.0 R248.2° (IF)	56°27'54.1"N 020°45'55.9"E
LEP D4.7 R248.2° (FAF)	56°29'33.8"N 020°56'59.8"E
LEP D2.1 R248.2° (SDF)	56°30'13.3"N 021°01'24.6"E
(MAPT)	56°30'46.0"N 021°05'05.1"E