

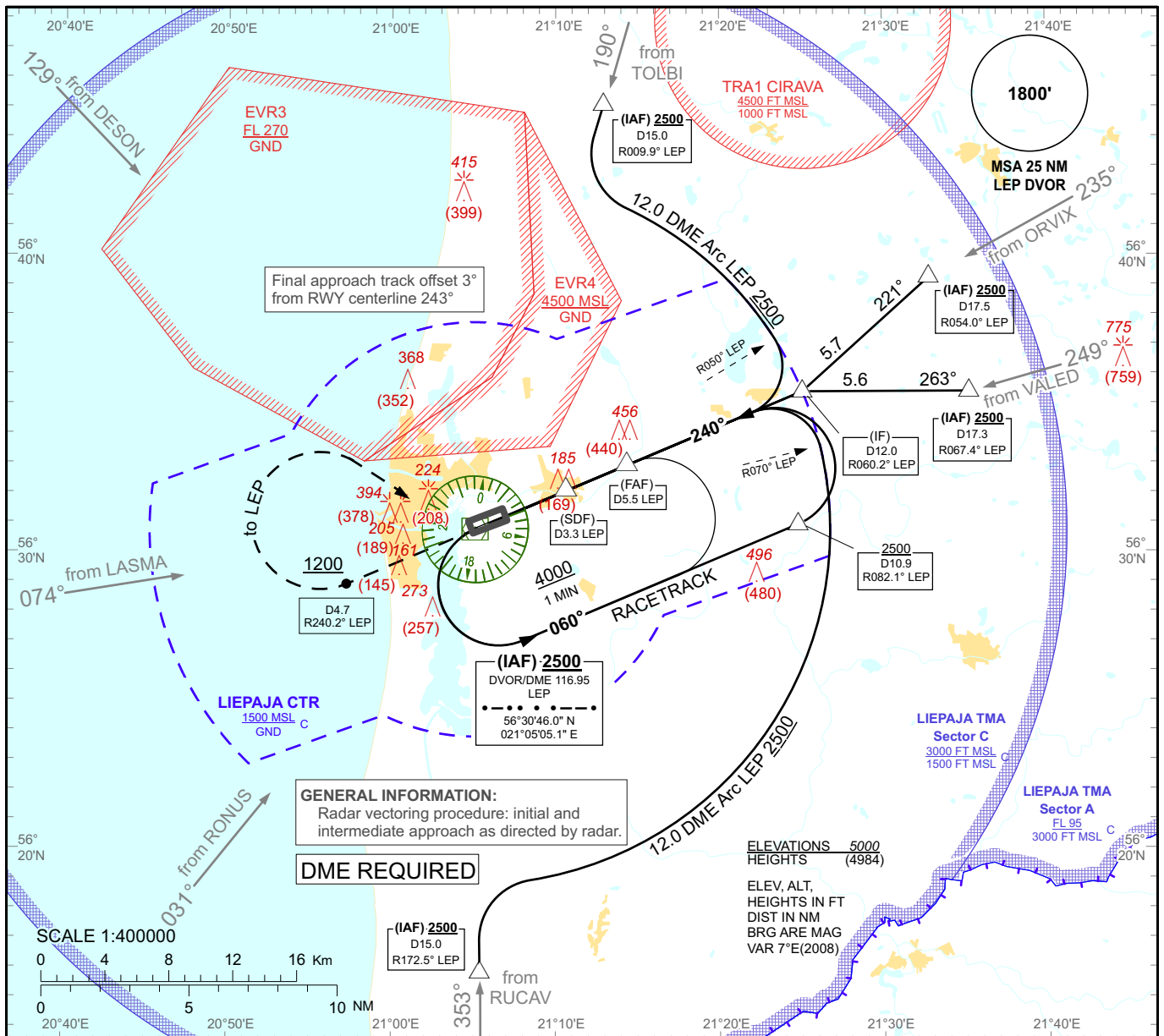
**INSTRUMENT  
APPROACH  
CHART - ICAO**

**AERODROME ELEV 16'**  
HEIGHTS RELATED TO  
THR RWY 24 - ELEV 16'

TOWER 129.400

LIEPAJA/Intl

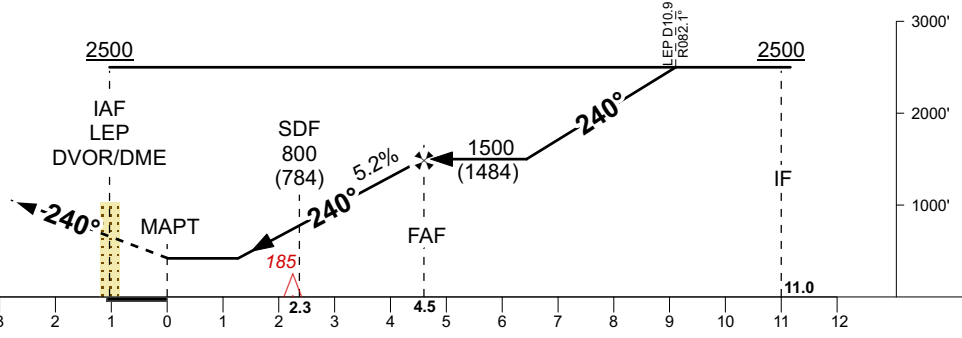
VOR RWY 24



TRANSITION ALT 5000

**MISSED APPROACH**

Climb on R-240° until passing 4.7 LEP DME or 1200 (1184), whichever is later, then turn RIGHT direct to LEP DVOR climbing to 2500 (2484) Missed approach turn speed limited 230 kt IAS maximum



THR ELEV 16  
NM from THR RWY 24

Aircraft Category	A	B	C	D	LEP	5	4	3
Straight-in Approach OCA(H)	VOR/DME	430 (410)			DIST THR	4	3	2
	VOR	690 (680)			ALTITUDE	1320	1010	690
Circling	690 (680)		850 (840)		HEIGHT	(1304)	(994)	(674)
	Timing not authorized for defining the MAPT							
GS	Kt	80	100	120	140	160	180	
Desc. Rate( 5.2%)	ft/min	422	528	633	739	844	950	
FAF-MAPT(4.5 NM)	min:sec	03:25	02:43	02:16	01:57	01:42	01:31	

Changes: TRA1 CIRAVA established

LIEPAJA/Intl

VOR RWY 24

AERONAUTICAL DATA TABULATION

VOR approach to RWY 24 from TOLBI, ORVIX, VALED, RUCAV, LEP DVOR/DME (IAF)	
Fix/point	Coordinates
LEP D15.0 R009.9° (IAF)	56°45'04.6"N 021°12'55.1"E
LEP D17.5 R054.0° (IAF)	56°39'15.4"N 021°32'48.0"E
LEP D17.3 R067.4° (IAF)	56°35'25.1"N 021°35'14.2"E
LEP D15.0 R172.5° (IAF)	56°15'49.2"N 021°05'23.4"E
LEP DVOR/DME (IAF)	56°30'46.0"N 021°05'05.1"E
LEP D12.0 R060.2° (IF)	56°35'25.2"N 021°25'03.8"E
LEP D5.5 R060.2° (FAF)	56°32'55.9"N 021°14'20.5"E
LEP D3.3 R060.2° (SDF)	56°32'04.3"N 021°10'39.2"E
(MAPT)	56°31'10.0"N 021°06'47.4"E