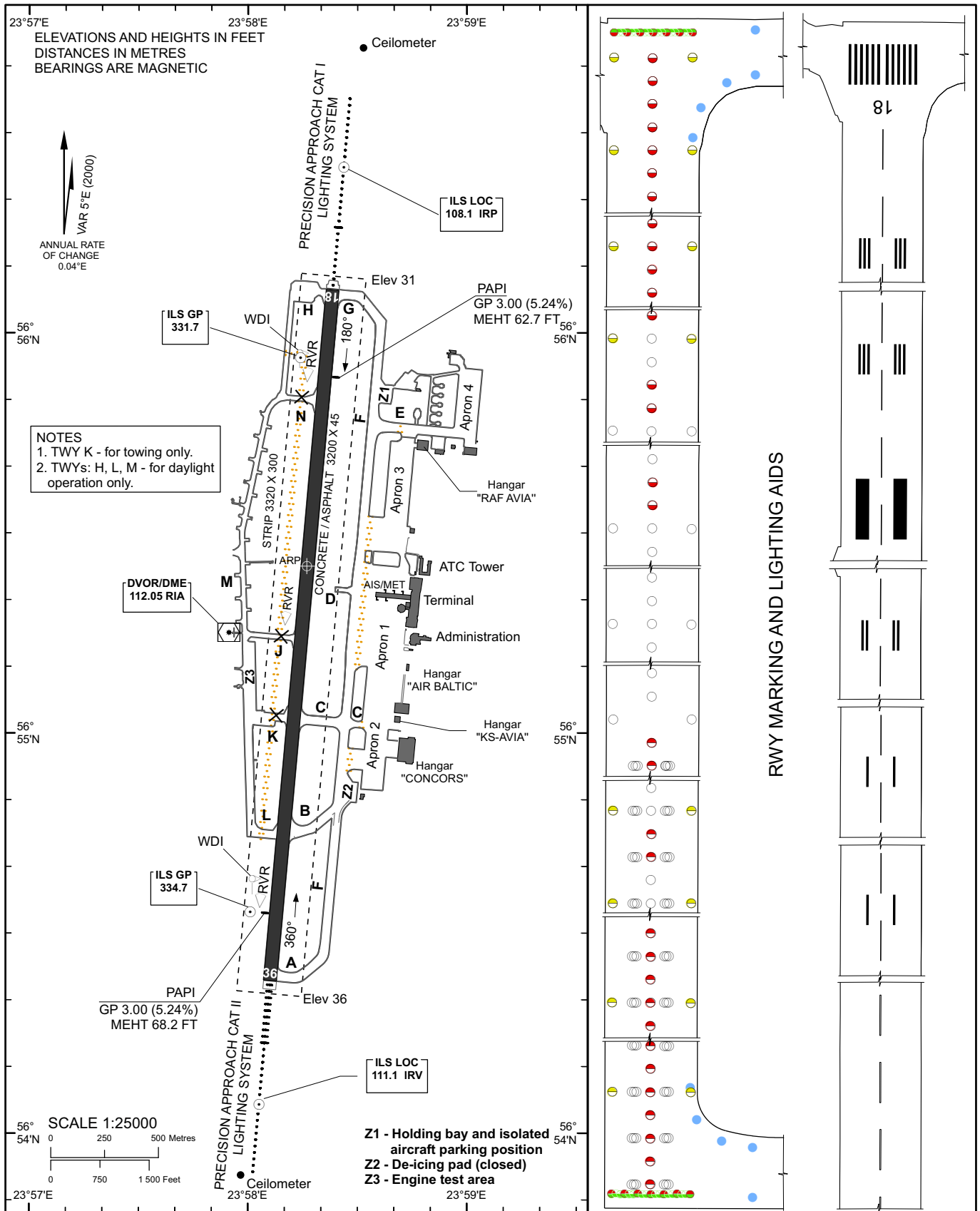


AERODROME CHART - ICAO

56°55'25"N
023°58'16"E ELEV 36'

TWR	118.100	RIGA TOWER
GMC	118.800	RIGA GROUND
GND Handling	131.600	RIGA TRANSIT
ATIS	121.200	RIGA INFO

RIGA / Intl



Changes: NOTES added

RWY	TRUE DIRECTION	THR	BEARING STRENGTH		Remarks:
			PCN	runways and taxiways	
18	185.18°	56°56'06.25"N 023°58'23.07"E	89/F/C/X/T	runways and taxiways A, E	1. APPROACH and RWY lighting see EVRAAD 2.14 2. RWY marking see EVRAAD 2.9 ♦♦♦♦♦♦♦♦ - ATC service boundary
36	005.17°	56°54'23.22"N 023°58'06.08"E	84/F/A/V/T 110/F/A/V/T 64/F/A/W/T 50/R/B/W/U	taxiway B taxiway C, G taxiway F taxiway H, M, L and Z1, Z3	

INTENTIONALLY LEFT BLANK