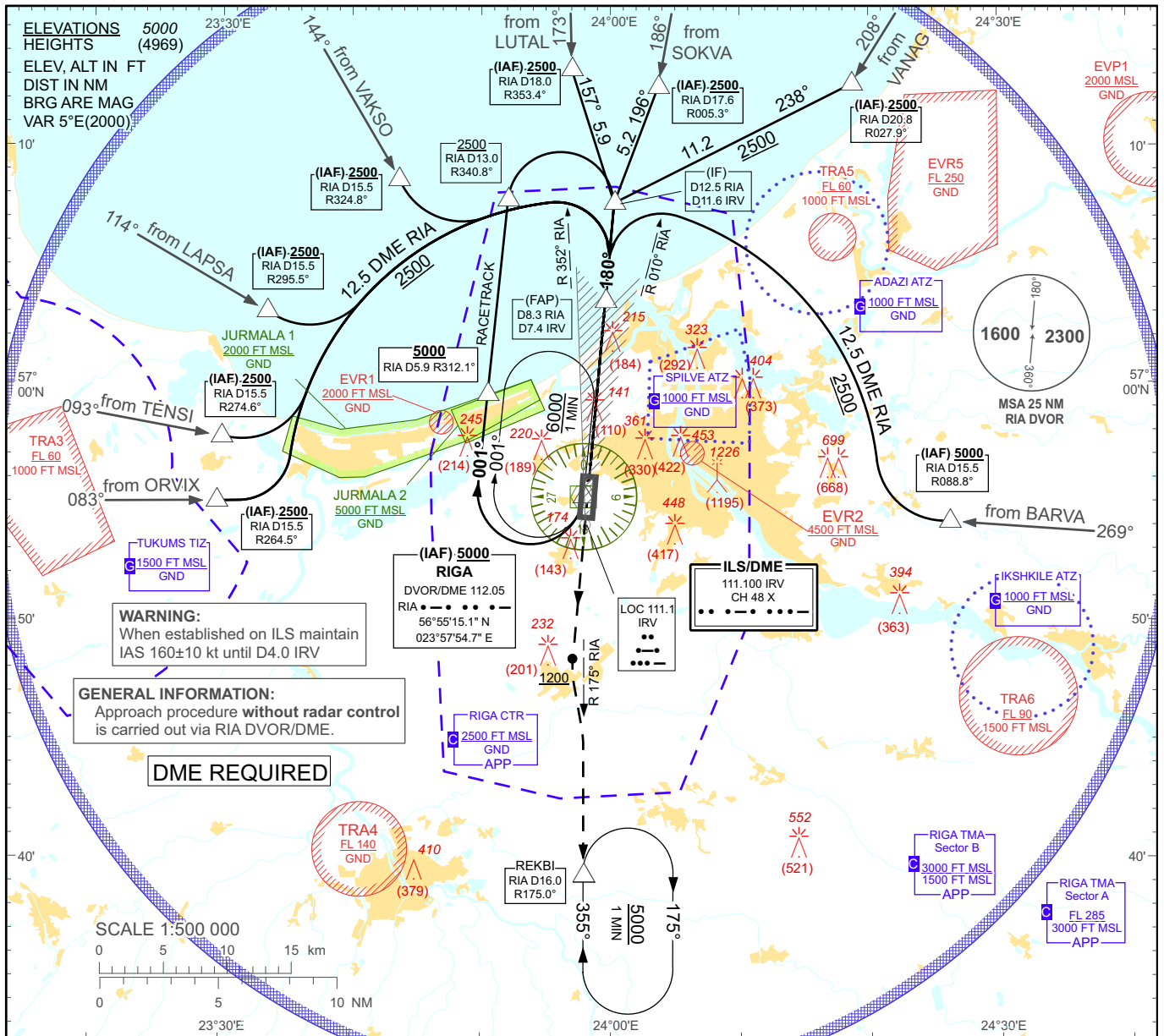


**INSTRUMENT  
APPROACH  
CHART - ICAO**

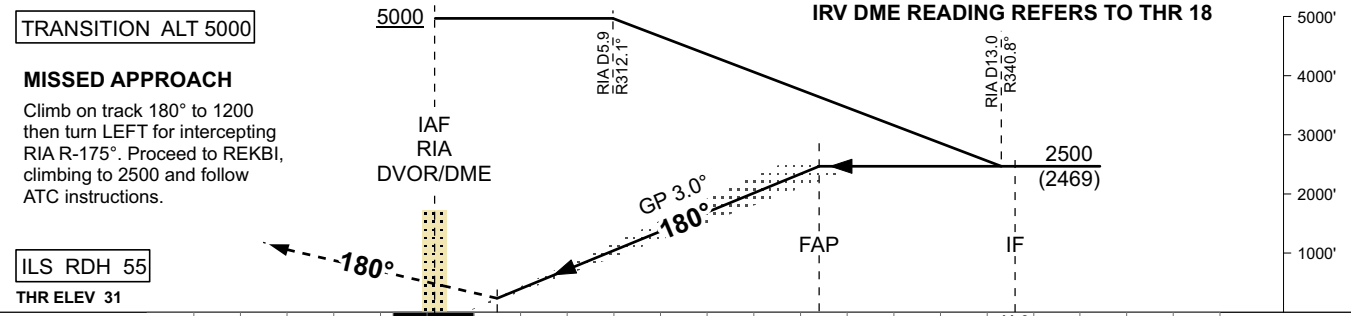
**AERODROME ELEV 36'**  
HEIGHTS RELATED TO  
THR RWY 18 - ELEV 31'

APP 129.925  
TOWER 118.100  
ATIS 121.200

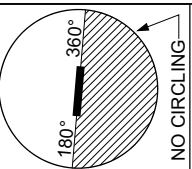
**RIGA/Intl**  
**ILS RWY 18**



Changes: APP frequency; circling OCA(H) recalculated; TSA 9; TSA 9A withdrawn; EVR5 established



Aircraft Category		A	B	C	D	DME IRV	7	6	5	4	3	2	1
Straight-in Approach OCA(H)	ILS Cat. I	231 (200)				DME RIA	7.9	6.9	5.9	4.9	3.9	2.9	1.9
	Circling	530 (500)		730 (690)		DIST THR	7	6	5	4	3	2	1
						ALTITUDE	2360	2030	1700	1380	1050	730	410
						HEIGHT	(2229)	(1999)	(1669)	(1349)	(1019)	(699)	(379)
						GS	Kt	80	100	120	140	160	180
						Rate of descent	ft/min	420	530	640	740	850	960



**REMARK:**  
- JURMALA 1, 2 - noise abatement areas (Ref. EVRAAD 2.21)

RIGA/Intl

ILS RWY 18

AERONAUTICAL DATA TABULATION

ILS approach to RWY18 from ORVIX, TENSI, LAPSA, VAKSO, LUTAL, SOKVA, VANAG, BARVA, RIA DVOR/DME (IAF)	
Fix/point	Coordinates
RIGA DVOR/DME (IAF)	56°55'15.1"N 023°57'54.7"E
RIA D15.5 R264.5° (IAF)	56°55'03.2"N 023°29'37.9"E
RIA D15.5 R274.6° (IAF)	56°57'47.0"N 023°29'59.4"E
RIA D15.5 R295.5° (IAF)	57°03'03.8"N 023°33'27.2"E
RIA D15.5 R324.8° (IAF)	57°08'36.6"N 023°43'36.6"E
RIA D18.0 R353.4° (IAF)	57°13'15.3"N 023°57'00.0"E
RIA D17.6 R005.3° (IAF)	57°12'30.4"N 024°03'41.6"E
RIA D20.8 R027.9° (IAF)	57°12'37.6"N 024°18'40.4"E
RIA D15.5 R088.8° (IAF)	56°54'10.9"N 024°26'08.1"E
RIA D12.5 IRV D11.6 (IF)	57°07'37.8"N 024°00'17.8"E
RIA D8.3 IRV D7.4 (FAP)	57°03'29.3"N 023°59'36.4"E
REKBI (Holding)	56°39'16.7"N 023°57'55.0"E