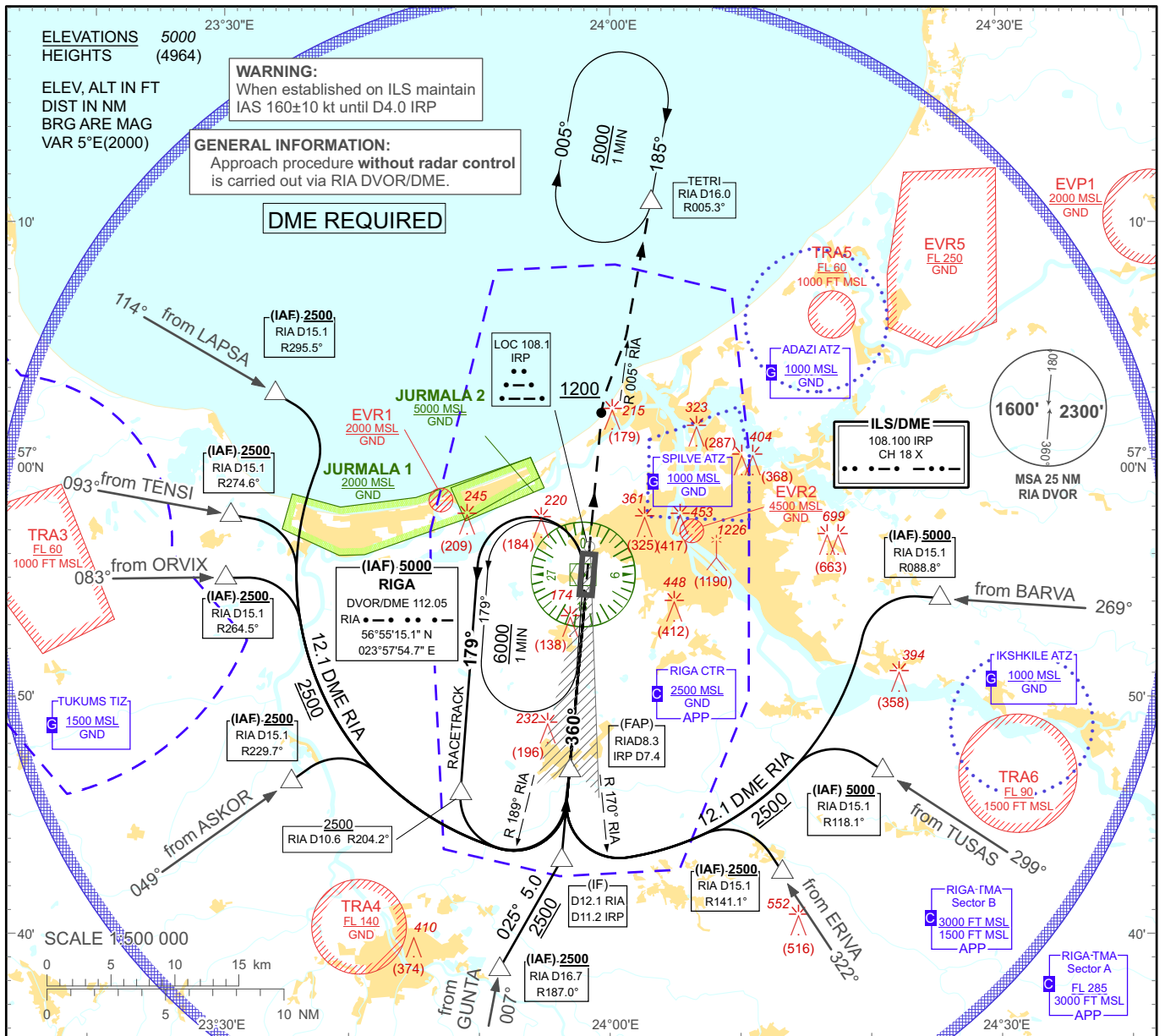


**INSTRUMENT  
APPROACH  
CHART - ICAO**

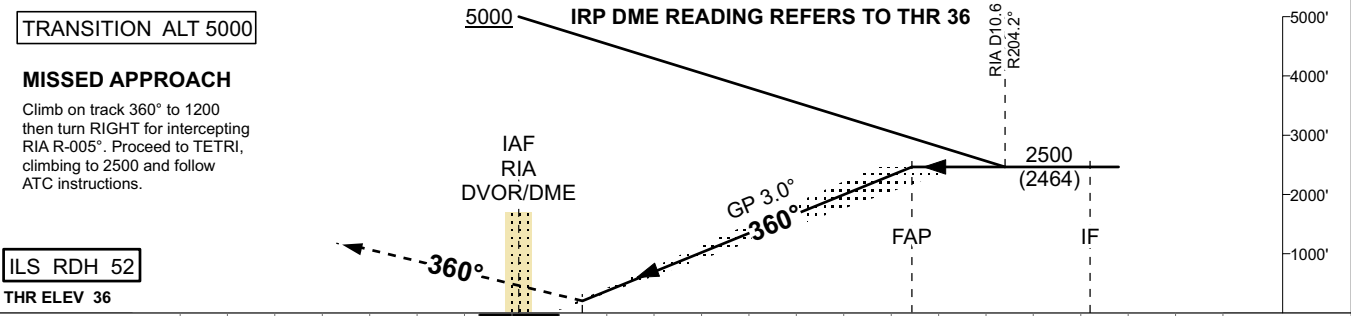
**AERODROME ELEV 36'**  
**HEIGHTS RELATED TO  
THR RWY 36 - ELEV 36'**

APP 129.925  
TOWER 118.100  
ATIS 121.200

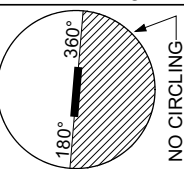
**RIGA/Intl**  
**ILS RWY 36**



Changes: APP frequency; circling OCA(H) recalculated; TSA 9, TSA 9A withdrawn, EVR5 established



Aircraft Category		A	B	C	D	DME IRP	7	6	5	4	3	2	1
Straight-in Approach OCA(H)	ILS Cat. I	236 (200)				DME RIA	7.9	6.9	5.9	4.9	3.9	2.9	1.9
						DIST THR	7	6	5	4	3	2	1
Circling		530 (500)		730 (690)		ALTITUDE	2360	2030	1700	1380	1050	730	410
						HEIGHT	(2324)	(1994)	(1664)	(1344)	(1014)	(694)	(374)
						GS	Kt	80	100	120	140	160	180
						Rate of descent	ft/min	420	530	640	740	850	960



**REMARK:**  
- JURMALA 1, 2 - noise abatement areas (Ref. EVRA AD 2.21)

RIGA/Intl

ILS RWY 36

AERONAUTICAL DATA TABULATION

ILS approach to RWY36 from BARVA, TUSAS, ERIVA, GUNTA, ASKOR, ORVIX, TENSI, LAPSA, RIA DVOR/DME (IAF)	
Fix/point	Coordinates
RIGA DVOR/DME (IAF)	56°55'15.1"N 023°57'54.7"E
RIA D15.1 R088.8° (IAF)	56°54'12.7"N 024°25'24.4"E
RIA D15.1 R118.1° (IAF)	56°46'58.7"N 024°20'54.9"E
RIA D15.1 R141.1° (IAF)	56°42'43.0"N 024°13'11.1"E
RIA D16.7 R187.0° (IAF)	56°38'37.8"N 023°51'31.5"E
RIA D15.1 R229.7° (IAF)	56°46'30.8"N 023°35'30.1"E
RIA D15.1 R264.5° (IAF)	56°55'03.6"N 023°30'21.7"E
RIA D15.1 R274.6° (IAF)	56°57'43.1"N 023°30'42.7"E
RIA D15.1 R295.5° (IAF)	57°02'51.8"N 023°34'05.2"E
RIA D12.1 IRP D11.2 (IF)	56°43'13.1"N 023°56'16.1"E
RIA D8.3 IRP D7.4 (FAP)	56°47'04.0"N 023°56'53.4"E
TETRI (Holding)	57°10'57.8"N 024°03'10.4"E