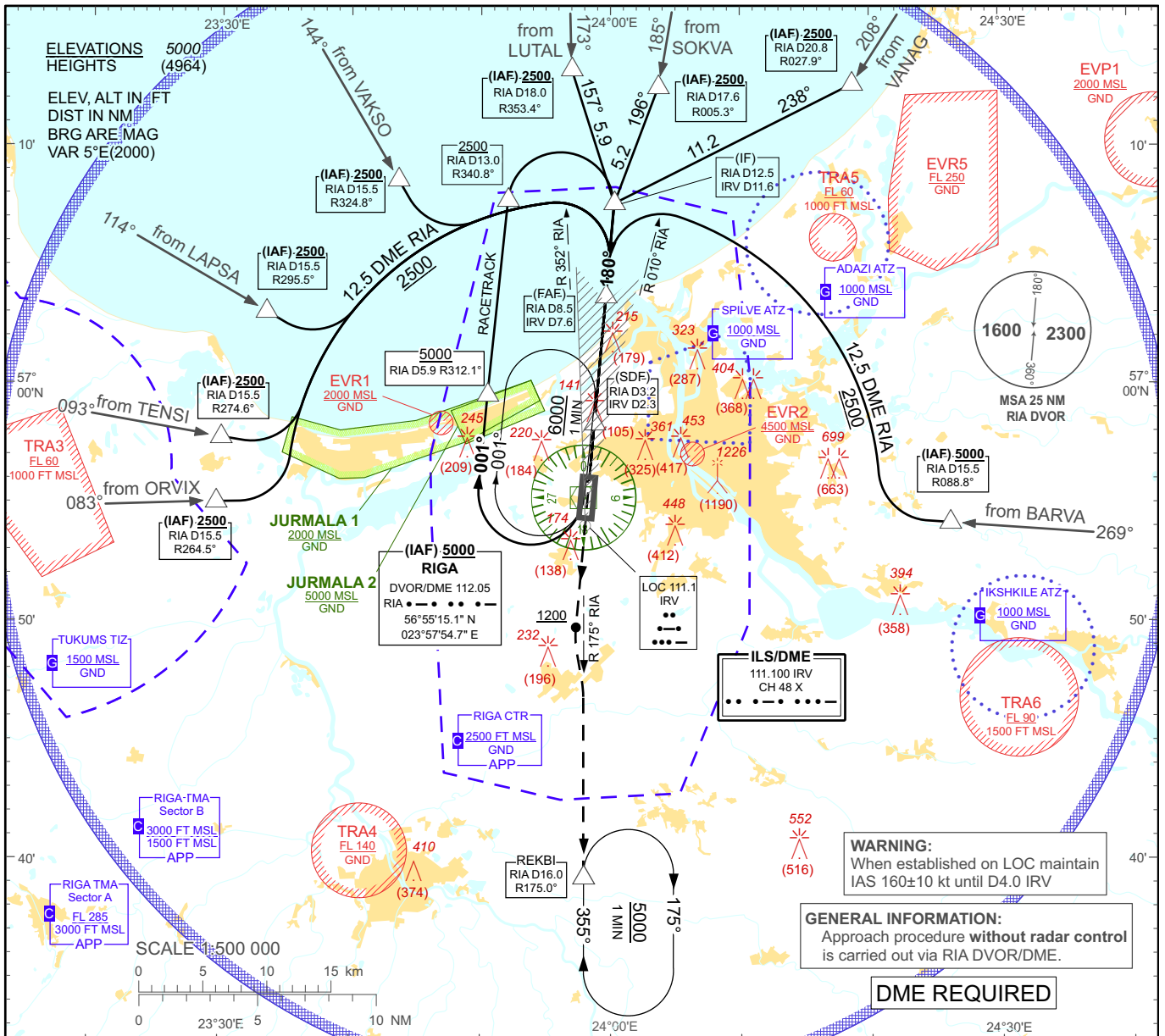


**INSTRUMENT
APPROACH
CHART - ICAO**

AERODROME ELEV 36'
HEIGHTS RELATED TO
AD - ELEV 36'

APP 129.925
TOWER 118.100
ATIS 121.200

RIGA/Intl
LOC RWY 18



Changes: APP frequency; circling OCA(H) recalculated: TSA 9, TSA 9A withdrawn, EVR5 established

TRANSITION ALT 5000

MISSED APPROACH
Climb on track 180° to 1200 then turn LEFT for intercepting RIA R-175°. Proceed to REKBI, climbing to 2500 and follow ATC instructions.

THR ELEV 31

NM from THR RWY 18	6	5	4	3	2	1	0.5	1	2	3	4	5	6	7	7.6	8	9	10	11	11.6	12	13	14	15	16							
Aircraft Category	A		B		C		D		DME IRV	7	6	5	4	3	2	1	DME RIA	7.9	6.9	5.9	4.9	3.9	2.9	1.9	DIST THR	7	6	5	4	3	2	1
Straight-in Approach OCA(H)	380 (340)		730 (690)		2300		1980		1670		1350		1030		720		400															
	530 (500)		730 (690)		(2264)		(1944)		(1634)		(1314)		(994)		(684)		(364)															
Altitude	530 (500)		730 (690)		(2264)		(1944)		(1634)		(1314)		(994)		(684)		(364)															
Height	530 (500)		730 (690)		(2264)		(1944)		(1634)		(1314)		(994)		(684)		(364)															
REMARK:																																
- JURMALA 1, 2 - noise abatement areas (Ref. EVRAAD 2.21)																																
Timing not authorized for defining the MAPT																																
GS	Kt		80	100	120	140	160	180	Rate of descent (5.2%)		ft/min		420	530	640	740	850	960	FAF-MAPT(7.1 NM)		min:sec		05:20	04:16	03:33	03:03	02:40	02:22				

IRV DME READING REFERS TO THR 18

09 APR 2009

RIGA/Intl

LOC RWY 18

AERONAUTICAL DATA TABULATION

LOC approach to RWY18 from ORVIX, TENSI, LAPSA, VAKSO, LUTAL, SOKVA, VANAG, BARVA, RIA DVOR/DME (IAF)	
Fix/point	Coordinates
RIGA DVOR/DME (IAF)	56°55'15.1"N 023°57'54.7"E
RIA D15.5 R264.5° (IAF)	56°55'03.2"N 023°29'37.9"E
RIA D15.5 R274.6° (IAF)	56°57'47.0"N 023°29'59.4"E
RIA D15.5 R295.5° (IAF)	57°03'03.8"N 023°33'27.2"E
RIA D15.5 R324.8° (IAF)	57°08'36.6"N 023°43'36.6"E
RIA D18.0 R353,4° (IAF)	57°13'15.3"N 023°57'00.0"E
RIA D17.6 R005.3° (IAF)	57°12'30.4"N 024°03'41.6"E
RIA D20.8 R027.9° (IAF)	57°12'37.6"N 024°18'40.4"E
RIA D15.5 R088.8° (IAF)	56°54'10.9"N 024°26'08.1"E
RIA D12.5 IRV D11.6 (IF)	57°07'37.8"N 024°00'17.8"E
RIA D8.5 IRV D7.6 (FAF)	57°03'43.2"N 023°59'38.8"E
RIA D3.2 IRV D2.3 (SDF)	56°58'22.2"N 023°58'45.6"E
RIA D1.4 IRV D0.5 (MAPT)	56°56'36.1"N 023°58'28.0"E
REKBI (Holding)	56°39'16.7"N 023°57'55.0"E