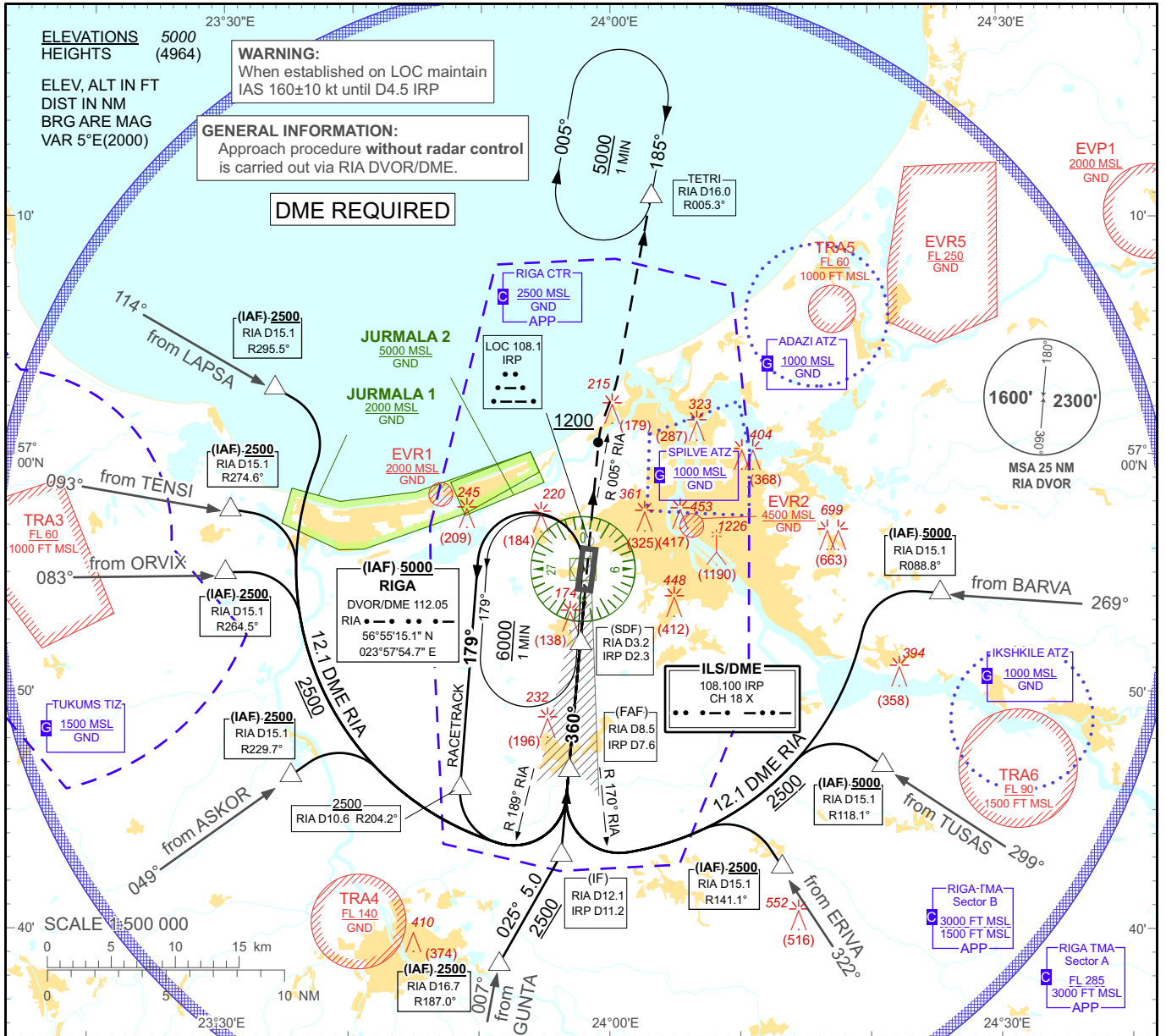


**INSTRUMENT  
APPROACH  
CHART - ICAO**

**AERODROME ELEV 36'**  
HEIGHTS RELATED TO  
AD - ELEV 36'

APP 129.925  
TOWER 118.100  
ATIS 121.200

**RIGA/Intl**  
**LOC RWY 36**



Changes: APP frequency; circling OCA(H) recalculated; TSA 9, TSA 9A withdrawn; EVR5 established

**TRANSITION ALT 5000**

**MISSED APPROACH**  
Climb on track 360° to 1200 then turn RIGHT for intercepting RIA R-005°. Proceed to TETRI, climbing to 2500 and follow ATC instructions.

**THR ELEV 36**

NM from THR RWY 36	8	7	6	5	4	3	2	1	0.5	1	2	3	4	5	6	7	7.6	8	9	10	11	11.2	12	13	14
Aircraft Category	A		B		C		D		DME IRP		7	6	5	4	3	2	1								
Straight-in Approach OCA(H)	LOC		380 (340)		DME RIA		7.9	6.9	5.9	4.9	3.9	2.9	1.9												
	Circling		530 (500)		730 (690)		DIST THR		7	6	5	4	3	2	1										
		ALTITUDE		2300	1980	1670	1350	1030	720	400															
		HEIGHT		(2264)	(1944)	(1634)	(1314)	(994)	(684)	(364)															
Timing not authorized for defining the MAPT																									
		GS	Kt		80	100	120	140	160	180															
		Rate of descent (5.2%)		ft/min		420	530	640	740	850	960														
		FAF-MAPT(7.1 NM)		min:sec		05:19	04:15	03:33	03:02	02:40	02:22														

**REMARK:**  
- JURMALA 1, 2 - noise abatement areas (Ref. EVRA AD 2.21)

**NO CIRCLING**

RIGA/Intl

LOC RWY 36

AERONAUTICAL DATA TABULATION

LOC approach to RWY36 from BARVA, TUSAS, ERIVA, GUNTA, ASKOR, ORVIX, TENSI, LAPSA, RIA DVOR/DME (IAF)	
Fix/point	Coordinates
RIGA DVOR/DME (IAF)	56°55'15.1"N 023°57'54.7"E
RIA D15.1 R088.8° (IAF)	56°54'12.7"N 024°25'24.4"E
RIA D15.1 R118.1° (IAF)	56°46'58.7"N 024°20'54.9"E
RIA D15.1 R141.1° (IAF)	56°42'43.0"N 024°13'11.1"E
RIA D16.7 R187.0° (IAF)	56°38'37.8"N 023°51'31.5"E
RIA D15.1 R229.7° (IAF)	56°46'30.8"N 023°35'30.1"E
RIA D15.1 R264.5° (IAF)	56°55'03.6"N 023°30'21.7"E
RIA D15.1 R274.6° (IAF)	56°57'43.1"N 023°30'42.7"E
RIA D15.1 R295.5° (IAF)	57°02'51.8"N 023°34'05.2"E
RIA D12.1 IRP D11.2 (IF)	56°43'13.1"N 023°56'16.1"E
RIA D8.5 IRP D7.6 (FAF)	56°46'47.2"N 023°56'51.3"E
RIA D3.2 IRP D2.3 (SDF)	56°52'08.2"N 023°57'43.9"E
RIA D1.4 IRP D0.5 (MAPT)	56°53'53.3"N 023°58'01.2"E
TETRI (Holding)	57°10'57.8"N 024°03'10.4"E