

RIGA/Intl RWY 36

STANDARD DEPARTURE CHART - INSTRUMENT (SID) - ICAO

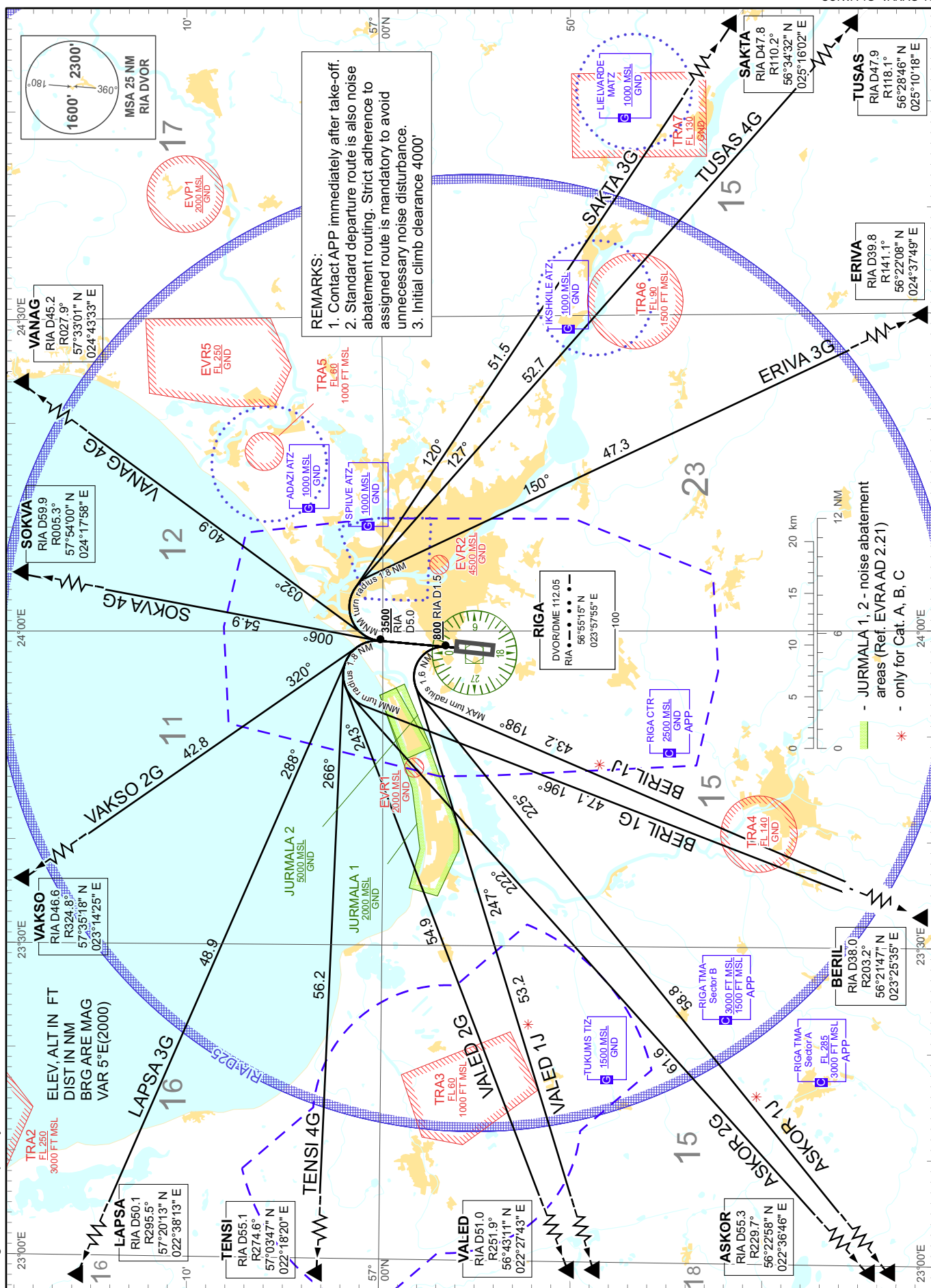
TRANSITION ALTITUDE 5000

APP 129.925
TOWER 118.100
ATIS 121.200

SAKTA 3G TUSAS 4G ERIVA 3G BERIL 1J
BERIL 1G ASKOR 1J ASKOR 2G VALED 1J
VALED 2G TENSI 4G LAPSA 3G VAKSO 2G
SOKVA 4G VANAG 4G

REMARKS:
1. Contact APP immediately after take-off.
2. Standard departure route is also noise abatement routing. Strict adherence to assigned route is mandatory to avoid unnecessary noise disturbance.
3. Initial climb clearance 4000'

Changes: APP frequency: TSA 9, TSA 9A withdrawn, EVR5 established



INTENTIONALLY LEFT BLANK