

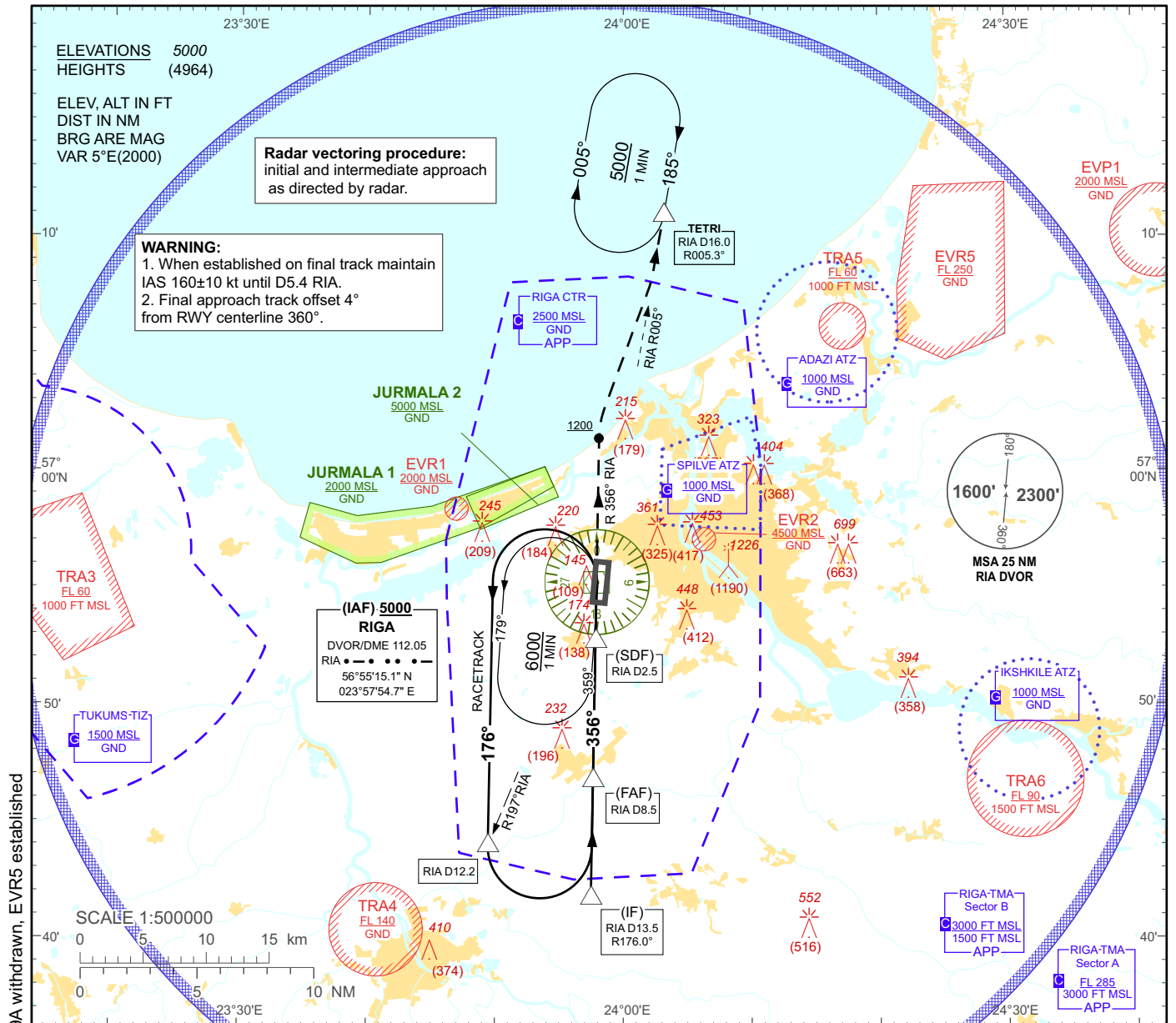
**INSTRUMENT
APPROACH
CHART - ICAO**

AERODROME ELEV 36'
HEIGHTS RELATED TO
AD - ELEV 36'

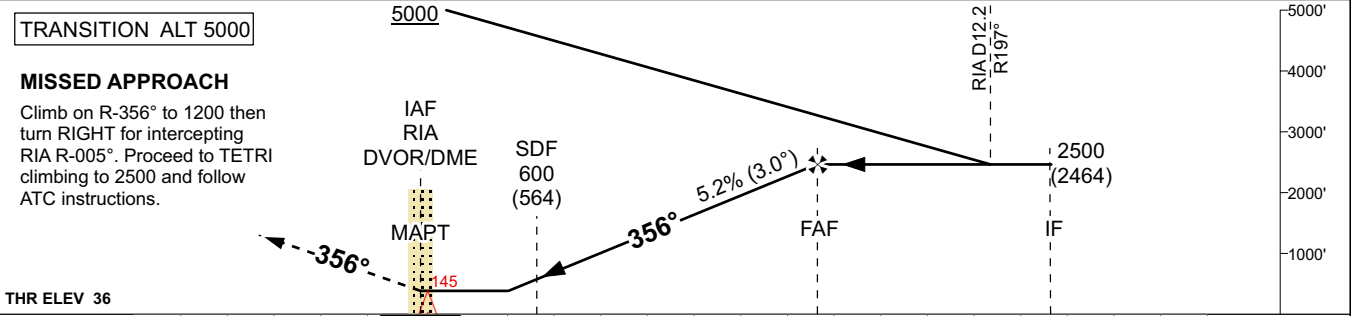
APP 129.925
TOWER 118.100
ATIS 121.200

RIGA/Intl

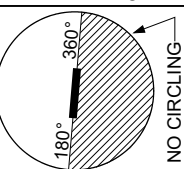
VOR RWY 36



Changes: APP frequency; circling OCA(H) recalculated; TSA 9, TSA 9A withdrawn, EVR5 established



Aircraft Category		A	B	C	D	8	7	6	5	4	3	2			
Straight-in Approach	VOR/DME	390 (360)					DIST THR	7.1	6.1	5.1	4.1	3.1	2.1		
	VOR	420 (390)					ALTITUDE	2330	2010	1700	1380	1070	750		
Circling		530 (500)			730 (690)			HEIGHT	(1994)	(1974)	(1664)	(1344)	(1034)	(714)	(404)



REMARK:
 - JURMALA 1, 2 - noise abatement areas (Ref. EVRA AD 2.21)

Timing not authorized for defining the MAPT

GS	Kt	80	100	120	140	160	180
Rate of desc.(5.2%)	ft/min	420	530	630	740	840	950
FAF-MAPT(8.5 NM)	min:sec	06:25	05:08	04:16	03:40	03:12	02:51

22 OCT 2009

RIGA/Intl

VOR RWY 36

AERONAUTICAL DATA TABULATION

VOR approach to RWY 36 from RIA DVOR/DME (IAF)	
Fix/point	Coordinates
RIGA DVOR/DME (IAF)	56°55'15.1"N 023°57'54.7"E
RIA D13.5 R176.0° (IF)	56°41'46.4"N 023°57'29.0"E
RIA D8.5 R176.0° (FAF)	56°46'45.8"N 023°57'38.5"E
RIA D2.5 R176.0° (SDF)	56°52'46.0"N 023°57'50.0"E
(MAPT)	56°55'15.1"N 023°57'54.7"E
TETRI (Holding)	57°10'57.8"N 024°03'10.4"E