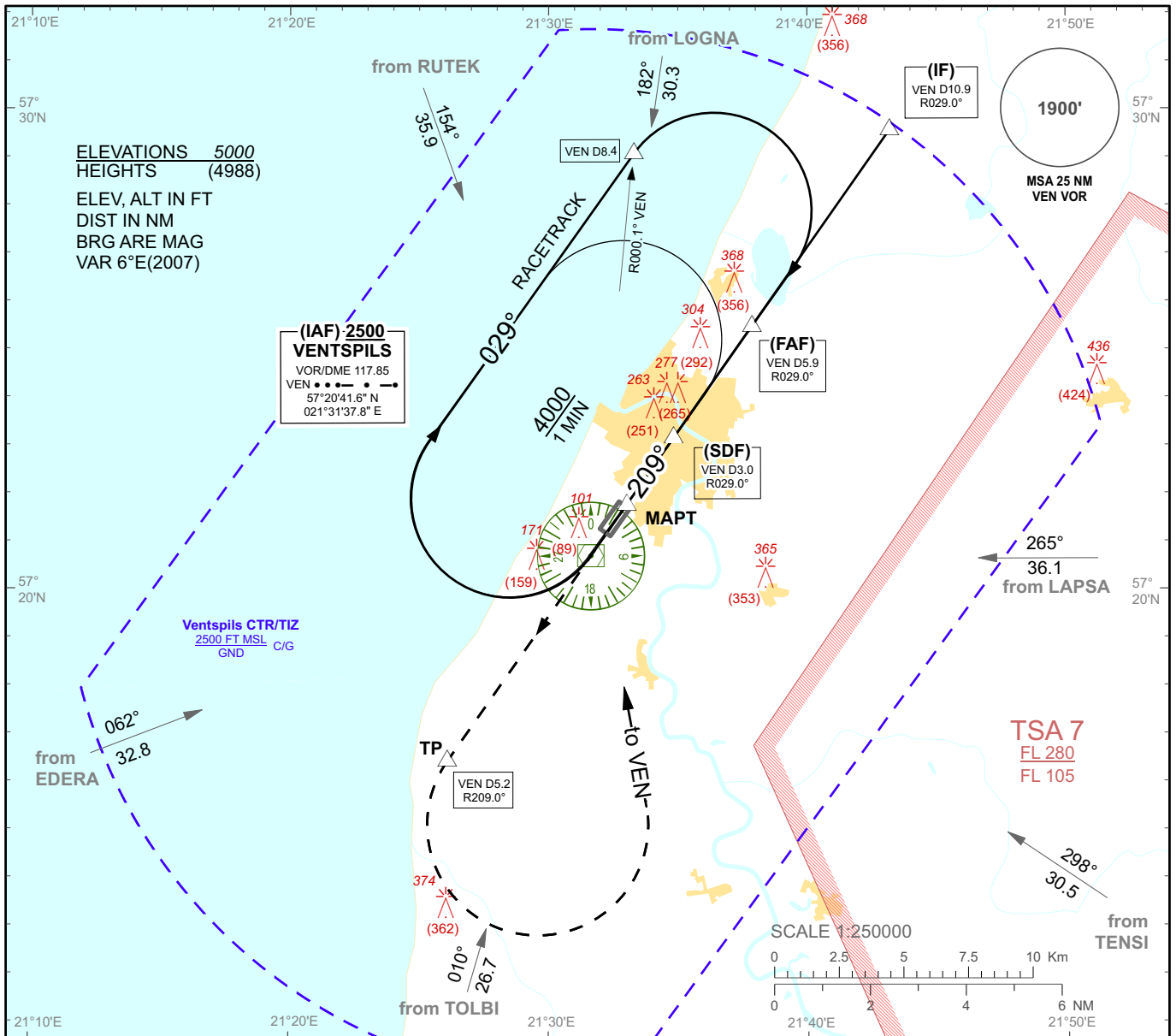


**INSTRUMENT
APPROACH
CHART - ICAO**

AERODROME ELEV 19'
**HEIGHTS RELATED TO
THR RWY 21 - ELEV 12'**

TWR/Information 123.900
METEO 126.800

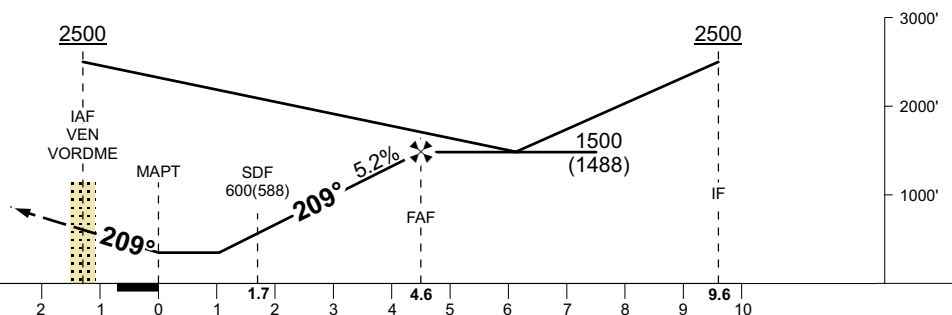
VENTSPILS/Intl
VOR RWY 21



TRANSITION ALT 5000

MISSED APPROACH

Climb on R-209° until passing 5.2 VEN DME or 1200 (1188), whichever is later, then turn LEFT direct to VEN VOR climbing to 2500 (2488) Missed approach turn speed limited **230 kt IAS maximum**



Aircraft Category	A	B	C	DME VEN	5.0	4.0	3.0	
Straight-in Approach OCA(H)	VOR/DME	390 (370)		DIST THR	3.7	2.7	1.7	
	VOR	560 (540)		ALTITUDE	1240	920	600	
Circling	560 (540)		580 (560)	760 (740)	Timing not authorized for defining the MAPT			
	GS	Kts	80	100	120	140	160	180
	Rate of desc.(5.2%)	ft/min	422	528	633	739	844	950
	FAF-MAPT(4.5 NM)	min:sec	03:24	02:44	02:16	01:57	01:42	01:31

Changes: editorial

VENTSPILS/Intl

VOR RWY 21

AERONAUTICAL DATA TABULATION

VOR approach to RWY 21 from VEN VOR/DME (IAF)	
Fix/point	Coordinates
VEN VOR/DME (IAF)	57°20'41.6"N 021°31'37.8"E
VEN D10.9 R029.0° (IF)	57°29'33.6"N 021°43'10.2"E
VEN D5.9 R029.0° (FAF)	57°25'28.8"N 021°37'50.6"E
VEN D3.0 R029.0° (SDF)	57°23'09.1"N 021°34'49.1"E
VEN D2.4 R029.0° (MAPT)	57°21'45.5"N 021°33'00.6"E
VEN D9.7 R209.0 (TP)	57°16'25.0"N 021°26'06.2"E