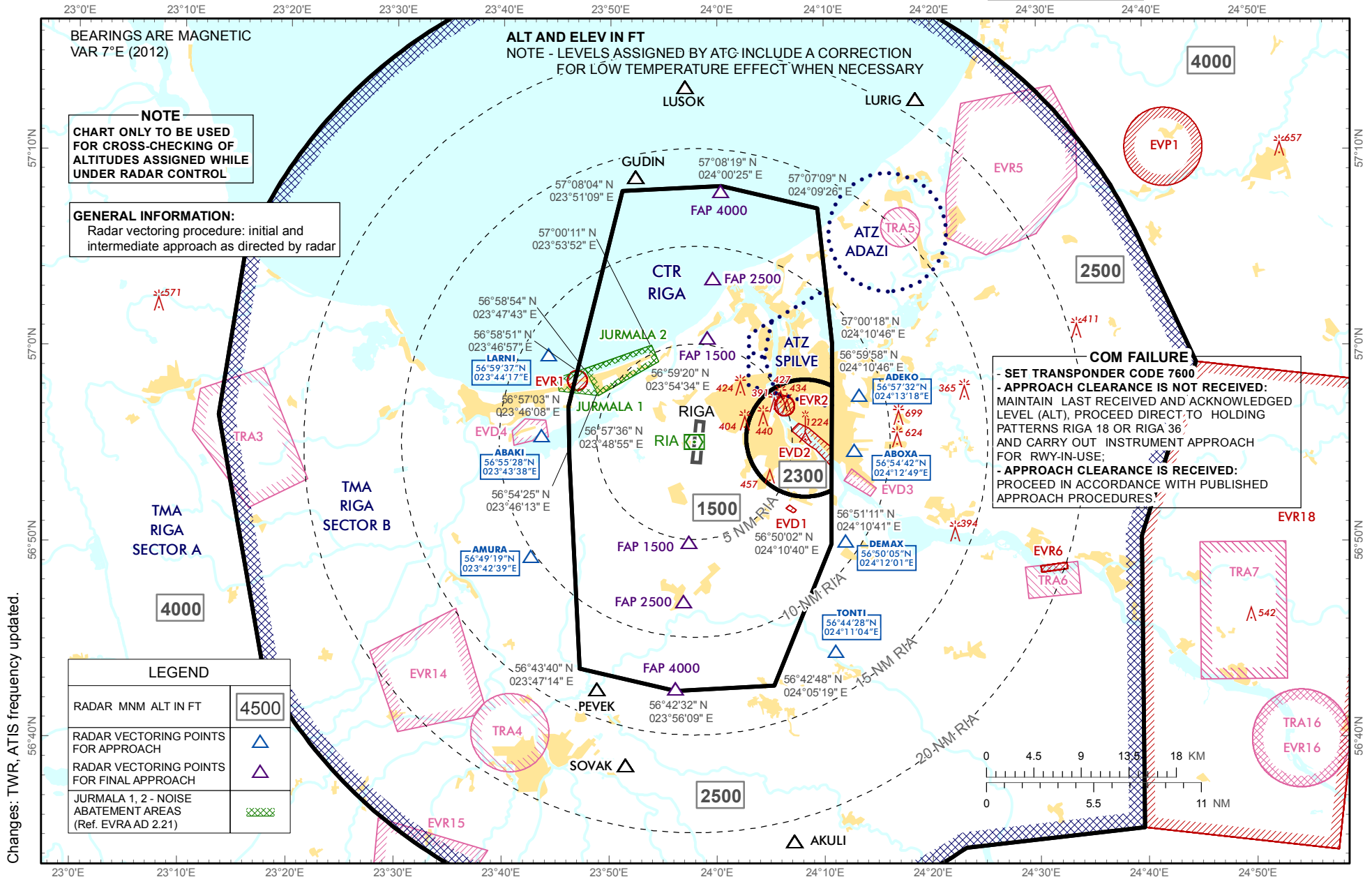


**ATC SURVEILLANCE MINIMUM
ALTITUDE CHART - ICAO**

**AERODROME ELEV 36 ft
TRANSITION ALT 5000 ft**

APP	129.925
TWR	134.850(HX)
ATIS	118.105
	120.180

RIGA (EVRA)



BEARINGS ARE MAGNETIC
VAR 7°E (2012)

ALT AND ELEV IN FT
NOTE - LEVELS ASSIGNED BY ATC INCLUDE A CORRECTION
FOR LOW TEMPERATURE EFFECT WHEN NECESSARY

NOTE
CHART ONLY TO BE USED
FOR CROSS-CHECKING OF
ALTITUDES ASSIGNED WHILE
UNDER RADAR CONTROL

GENERAL INFORMATION:
Radar vectoring procedure: initial and
intermediate approach as directed by radar

COM FAILURE
- SET TRANSPONDER CODE 7600
- APPROACH CLEARANCE IS NOT RECEIVED:
MAINTAIN LAST RECEIVED AND ACKNOWLEDGED
LEVEL (ALT), PROCEED DIRECT TO HOLDING
PATTERNS RIGA 18 OR RIGA 36
AND CARRY OUT INSTRUMENT APPROACH
FOR RWY-IN-USE;
- APPROACH CLEARANCE IS RECEIVED:
PROCEED IN ACCORDANCE WITH PUBLISHED
APPROACH PROCEDURES.

LEGEND	
RADAR MNM ALT IN FT	4500
RADAR VECTORING POINTS FOR APPROACH	▲
RADAR VECTORING POINTS FOR FINAL APPROACH	▲
JURMALA 1, 2 - NOISE ABATEMENT AREAS (Ref. EVRA AD 2.21)	▨

Changes: TWR, ATIS frequency updated.

INTENTIONALLY LEFT BLANK